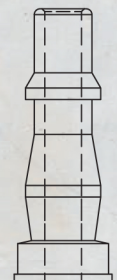


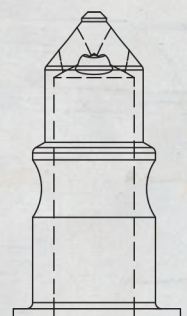


ACTUAL SIZE ADAPTOR PROFILES

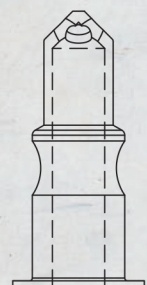


STANDARD RANGE

The adaptor profiles displayed are actual size - just place your adaptor on the matching drawing to find its interchange.



100 SERIES



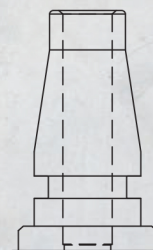
60 SERIES



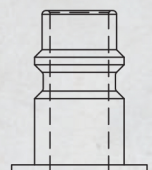
MINI RANGE



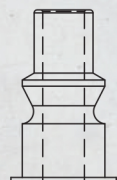
INSTANTAIR RANGE



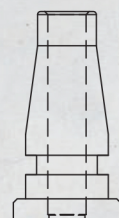
HEAVY DUTY SCHRADER



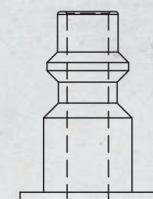
XF RANGE



EURO RANGE



PF RANGE



ISO B12 RANGE



KF RANGE

ACTUAL SIZE THREADFORM PROFILES

Male thread profiles, displayed as actual size - just place your thread on the matching drawing to find its size.

R, Rp, Rc threads are taken from BS21:1985 pipe threads for tubes and fittings where pressure tight joints are made on the threads.

G threads are taken from BS2779:1986 pipe threads for tubes and fittings where pressure tight joints are not made on the threads

R 1/8 MALE THREAD

R 1/4 MALE THREAD

R 3/8 MALE THREAD

R 1/2 MALE THREAD

