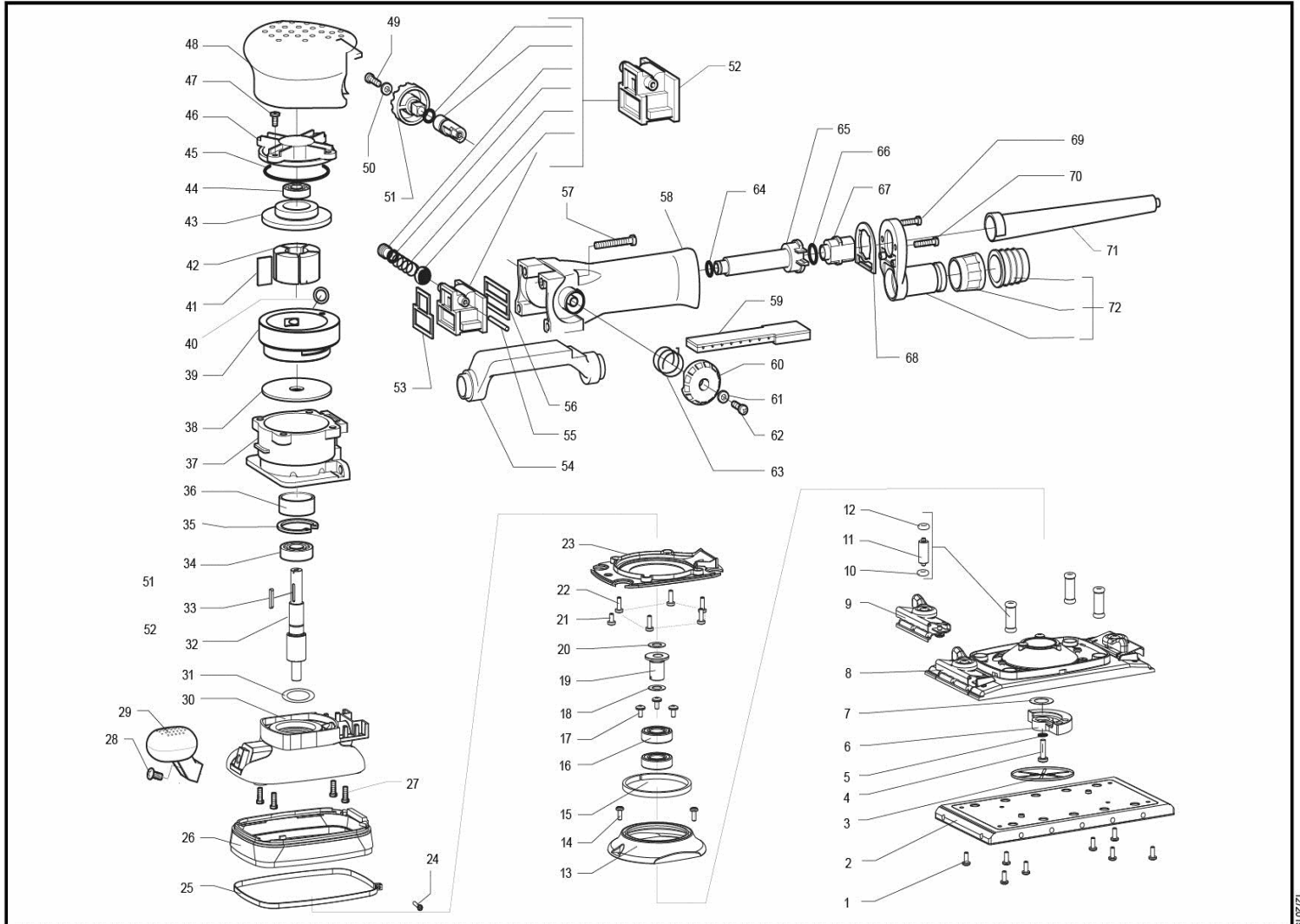


LEVIGATRICE ORBITALE PNEUMATICA CON ASPIRAZIONE
 PNEUMATIC ORBITAL SANDER WITH DUST EXTRACTION

SO210AP



ID	ITEM	DESCRIPTION
001	9.624	SCREW M4 x 10 T.C.C. BURNISHED
002	983.005	VELCRO PLATE HOOKIT I
003	610.290	CUP FOR PLATE
004	9.822	SCREW 2M5 x 20 T.C.C. cl. 8.8 h2,5 x Ø 9
005	9.251	STEEL WASHER d 9 x 5,4 s 1,8 autobl. NL5D AK200
006	57.195	PRIMARY COUNTERWEIGHT ZAMA
007	9.217	STEEL WASHER d25 x 15,2 s 0,3
008	61.290/C	BASE PLATE WITH BOWS
009	615.325/C	COMPLETE BOW GROUP
010	9.2015	O-RING 4X4
011	630.290	POLISHED PIN
012	9.2015	O-RING 4X4
013	611.290	WOVEN WIRE SO31TE
014	9.624	SCREW M4 x 10 T.C.C. BURNISHED
015	609.290	FELT RING
016	9.37/10	BEARING 6002 2RS
017	9.6152	SCREW M4 x 8 ACC.8.8 T.CROSS D.10 BRU.
018	70.255	d25 x 20 s1 FELT WASHER
019	56.290	ECCENTRIC 1.25 SO31TE
020	9.2021	WASHER LMKAS 16 d15,8x10,5 s 0,3
021	9.6152	SCREW M4 x 8 ACC.8.8 T.CROSS D.10 BRU.
022	9.614	SCRE M4 x 12 T.C.C. d7,7 BRN 8.8
023	326.290	WOVEN-WIRE COVER
024	9.606	SCREW M3 x 18 T.C.C. NIK
025	64.290	HOSE CLAMP PLATE
026	63.290	RUBBER RING
027	9.6154	SCREW M4 x 16 ACC.8.8 T.CROSS D.10 BRU.
028	9.645	SCREW M8 x 16 T.C.C. BURNISHED
029	81.153	KNOB
030	33.195	FLANGE
031	70.086	FELT WASHER
032	51.195	ROTOR SHAFT
033	9.453	FLAP 3x3x18 UNI 6604-A
034	9.37/10	BEARING 6002 2RS
035	9.103	SEEGER d 12 TIPO E DIN 471 CR3 PHOSPHATE
036	53.153	SPACER
037	311.150	MOTOR BODY
038	27.186	LOWER HEAD
039	2.187	RIGHT CYLINDER
040	9.2001	O-RING 2031
041	18.186/C6/10	VANES AK200A 10pcs.
042	1.186	ROTOR
043	28.186	UPPER HEAD
044	9.46/10	BEARING 6001 ZZ C3
045	9.2005	O-RING 3218
046	33.150	COVER
047	9.624	SCREW M4 x 10 T.C.C. BURNISHED
048	81.150	CAP
049	9.619	SCREW M4 x 23 T.C.C.BURNISHED
050	9.346	STEEL WASHER SL42AE 4x10x0,5
051	30.150	REGULATOR KNOB
052	29.153/C	COMPLETE VALVE GROUP
053	691.150	FRONT GASKET TK251A
054	67.150	SUCTION PIPE
055	9.2008	ROLL d 3 x23,8
056	692.150	BACK GASKET

ID	ITEM	DESCRIPTION
057	9.667	SCREW M4 x 40 TC BURNISHED
058	44.150/C	LONG HANDLE+INSERT
059	661.150	SILENCER
060	38.150	SWITCH-ON KNOB TA551
061	9.346	STEEL WASHER SL42AE 4x10x0,5
062	9.624	SCREW M4 x 10 T.C.C. BURNISHED
063	381.150	STARTING SPRING
064	9.2001	O-RING 2031
065	46.150	INSERT HANDLE
066	9.2006	O-RING 2050
067	43.150/C	AIR ENTRY CONNECTOR
068	421.150	TK251A TERMINAL GASKET
069	9.709	SCREW 4 x30 TGS BURNISHED
070	9.708	SCREW 4 x25 TGS BURNISHED
072	42.150/C	COMPLETE END CONNECTION