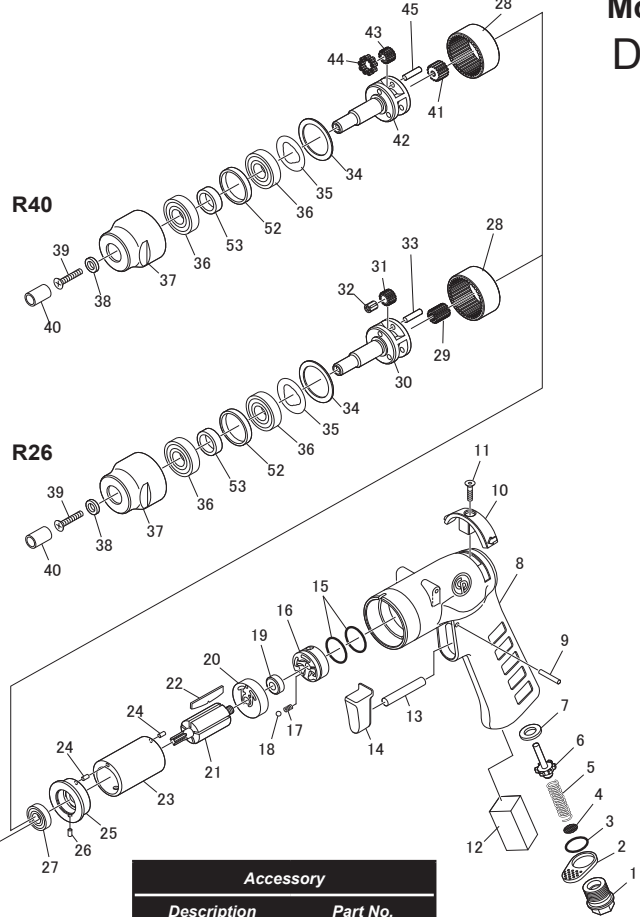
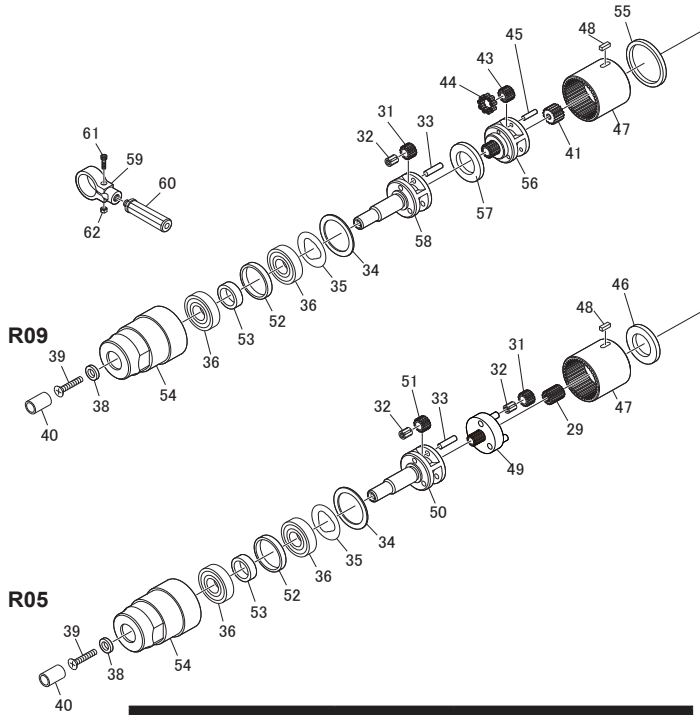




Chicago Pneumatic

CP1114R Series Model C DRILL



Item	Grease	Tightening torque
1	/	24.5 - 28.4 Nm
37 / 54	/	44.1 - 53.9 Nm
3 / 15 / 17 / 32 / 44	Alvania	/
28 / 33 / 41 / 43 / 45 / 48	Molybdenium	/

Accessory	
Description	Part No.
Suspension Bail	473153

Item No.	Part No.	Description	Q'ty
6	CA142460	Valve	1
7	C139037	Seat Throttle	1
8	8940173993	Housing-Motor	1
21	8940174000	Rotor	1
23	8940174002	Cylinder	1
28	8940174004	Gear-internal(2600)	1
30	8940174006	Spindle	1
37	8940174010	Housing-Gear	1
38	CA146088	Chuck Spacer	1
42	8940174013	Spindle	1
46	8940174017	Spacer	1
50	8940174020	Spindle	1
54	8940174022	Housing-Gear	1
55	8940174023	Spacer	1
56	8940174024	Reduction Spindle	1
57	8940174025	SpacerA	1
58	8940174026	Spindle	1
63	8940174027	Chuck R05 - R09	1
64	8940174028	Chuck R26 - R40	1
65	8940174029	Key Chuck	1
A	8940174046	Inlet Kit	
1		Inlet Bushing	1
2		Deflector	1
3		O-Ring	1
4	CA059037	Screen	1
B	8940174047	Reverse Button Kit	
10		Button-Reverse	1
11		Screw	1
C	8940174048	Trigger Kit	
9		Pin-Roll	1
13		Pin-Throttle	1
14		Trigger	1
D	8940174049	Reverse Valve Kit	
15		O-Ring	2
16		Reverse Valve	1
17		Spring	1
18		Steel Ball	1
E	8940174050	Rear End Plate Kit	
19	CA155004	Ball Bearing	1
20		Plate-Rear End	1
24		Pin-Roll	1
F	8940174051	Front End Plate Kit	
24		Pin-Roll	1
25		Plate-Front End	1
26		Pin Roll	1
27	C087834	Bearing	1
G	8940174052	Idler Kit A (for CP1114R09 & CP1114R26)	
31		Gear-Idler	3
32	KF125239	Bearing Needle	3
33		Pin-Idler	3

Item No.	Part No.	Description	Q'ty
H	8940174053	Idler Kit B (for CP1114R05)	
32	KF125239	Bearing Needle	3
33		Pin-Idler	3
51		Gear-Idler	3
I	8940174054	Idler Kit C (for CP1114R09 & CP1114R40)	
41		Pinion Gear	1
43		Gear-Idler	3
44	8940174015	Needle-Roller	27
45		Pin-Idler	3
J	8940174055	Reduction Spindle Kit (for CP1114R05)	
29		Pinion Gear	1
31		Gear-Idler	3
32		Bearing Needle	3
49		Reduction Spindle	1
K	8940174056	Bearing Kit	
34	8940174009	Washer	1
35		Seal Plate	1
36		Bearing Ball	2
L	8940174057	Spacer Kit	
52		Spacer1	1
53		Spacer2	1
M	8940174058	Pinion Gear Kit (for CP1114R05 & CP1114R09)	
47		Gear-internal(500)	1
48	CA156611	Key	1
N	8940174059	Tune Up Kit	
3		O-Ring	1
4	CA059037	Screen	1
5	CA156613	Spring-Compression	1
12		Muffler	1
15		O-Ring	2
22	8940174001	Blade	5
O	8940174060	Small Parts Kit	
11		Screw	1
17		Spring	1
18		Steel Ball	1
24		Pin-Roll	2
26		Pin Roll	1
39	CA146086	Chuck Screw	1
48		Key	1
P	8940174061	Support Handle Kit	
59		Ring-Clamp	1
60		Handle-Support	1
61		Included in #59	1
62		Included in #59	1

	8940173960	Operator's Manual
	8950900061	Warning label
	6159948740	Safety Instructions

Spare parts without part number are not sold separately
Contact us at www.cp.com

03/02/2017
8940174066 Rev. : 03