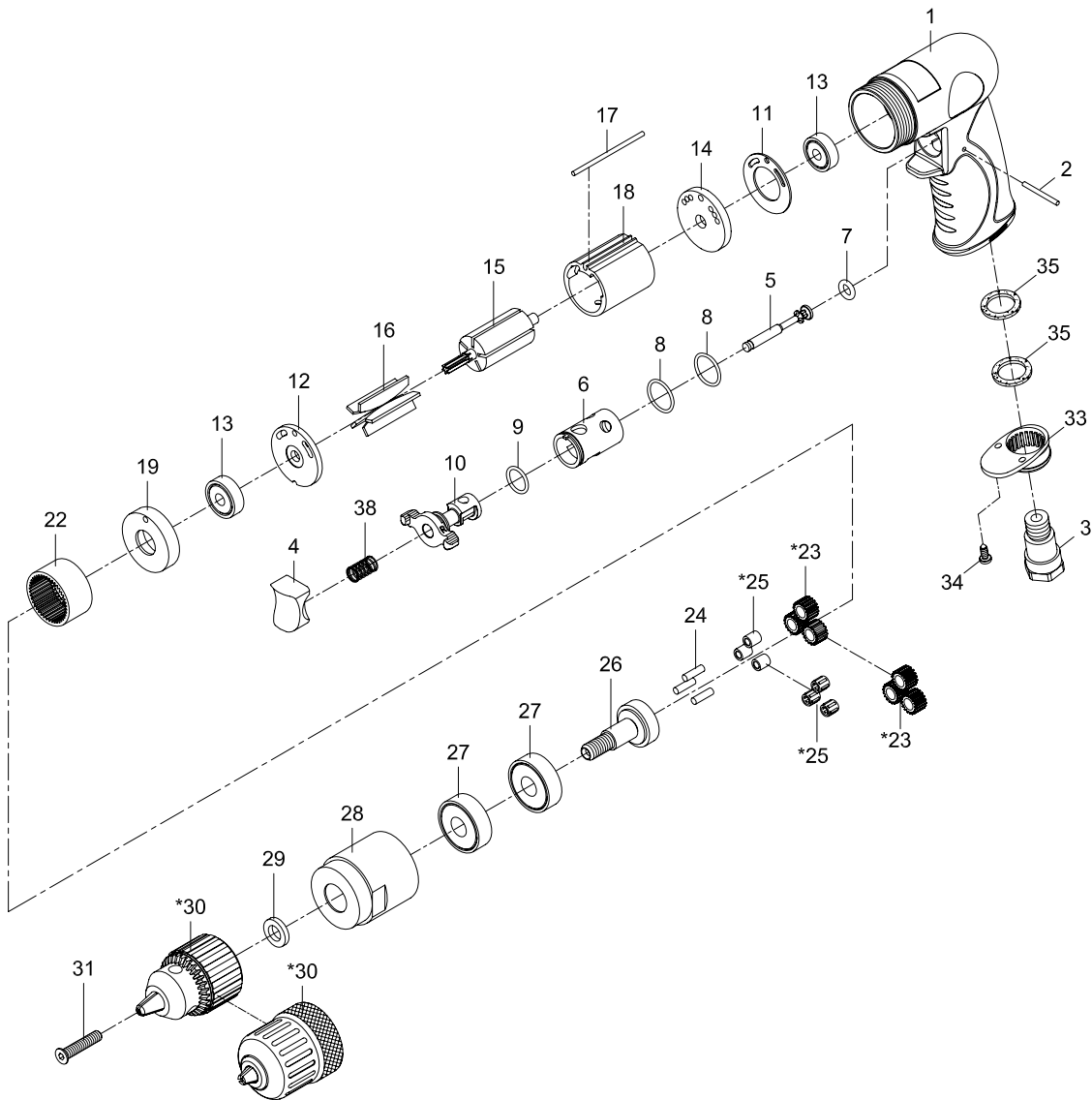


3/8" REVERSIBLE DRILL



Index No.	Parts No.	Description	Index No.	Parts No.	Description
1	75-7253P01-0023	Motor Housing	19	80219	Front End Plate
2	822202	Pin (2.5x26.8)	22	80222	Internal Gear
3	75-725303	Air Inlet		80223-11	Planet Gear (3)
4	75-725304	Trigger	*23	80223-14	Planet Gear (3)
5	75-725305	Valve Stem	24	30124	Pin (3) (4x13.8)
6	75-725306	Valve Bushing	*25	80225	Bushing (3)
7	72807-12	O-Ring (4.5x2.5)		080245	Needle Bearing (3) (4x7x8)
8	795820	O-Ring (2) (15.5x1.5)	26	70526	Work Spindle
9	80209	O-Ring (12x1.6)	27	080227	Ball Bearing (2) (6201z)
10	75-725310	Reverse Lever	28	70534	Clamp Nut
11	80211	Motor Gasket	29	70133	Washer
12	80214	End Plate	*30	10035-13	Industrial Key Chuck (3/8")
13	030113	Ball Bearing (2) (626zz)		10035-14	Industrial Keyless Chuck (3/8")
14	75-725314	Rear End Plate	31	70530	Screw (M5x25)
15	80215-12	Rotor	33	70110-21	Exhaust Diffuser
16	80216	Rotor Blade (5)	34	40309	Screw (2) (TS2.9)
17	75-725317	Pin (2.5x57)	35	75-725350	Damping Material (2)
18	80218-22	Cylinder	38	82208	Valve Spring

* Optional Parts

75-7253P-0003

01,04,2010